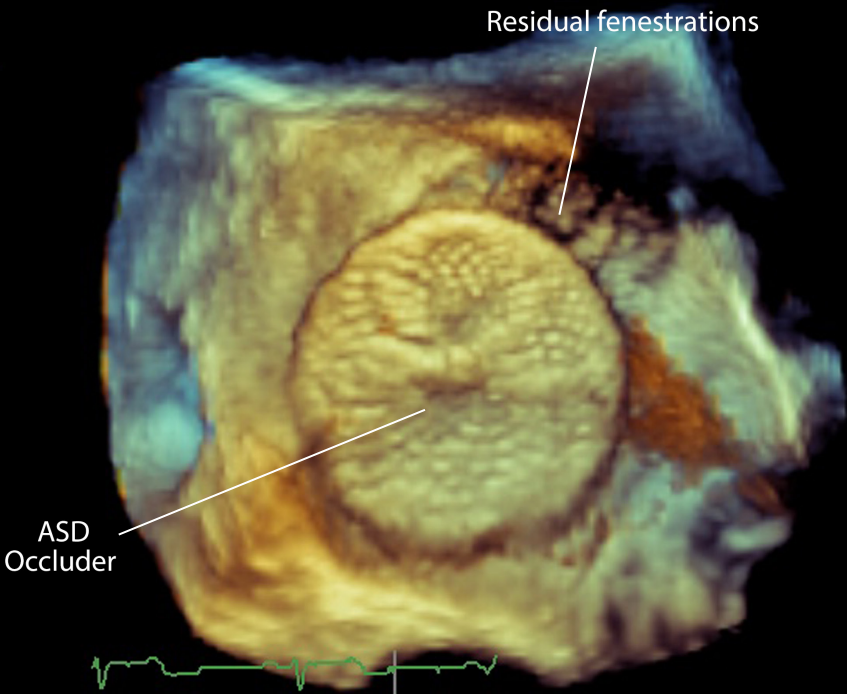


Echocardiography of Congenital Heart Disease

Sunday, April 15 –
Tuesday, April 17, 2018

Ruth and Tristram Colket, Jr.
Translational Research Building on
the Raymond G. Perelman Campus

Learn more: chop.cloud-cme.com



Overview

This course will discuss the morphology and echocardiographic imaging of the majority of congenital heart defects and the major postoperative findings for these lesions. It will also include assessment of ventricular performance in the pediatric patient population and provide case studies for review.

General Information

The conference will be held in the Ruth and Tristram Colket, Jr. Translational Research Building on the Raymond G. Perelman Campus at Children's Hospital of Philadelphia. The registration fee is \$450 for physicians and \$350 for fellows, sonographers and other healthcare professionals. The fee includes continental breakfast, breaks, lunch, parking and syllabus material.

Course Objectives

1. Enhance knowledge of the spectrum of congenital heart defects based on morphology and pathology
2. Apply particular echocardiographic views and sweeps to diagnose congenital heart disease before and after surgical intervention
3. Enhance ability to assess ventricular performance in patients with congenital heart disease

ACCME Accreditation Statement

Children's Hospital of Philadelphia is accredited by the Accreditation Council for Continuing Medical Education (ACCME) to provide continuing education for physicians.

AMA Credit Designation Statement

Children's Hospital of Philadelphia designates this live activity for a maximum of 20.0 *AMA PRA Category 1 Credits™*. Physicians should claim only the credit commensurate with the extent of their participation in the activity.

Hotel Accommodations

A block of rooms has been reserved at reduced rates at The Sheraton University City, located just a few blocks from Children's Hospital. The group overnight rate is \$172 single and double occupancy plus a 15.2 percent room tax. Participants are required to make their own hotel reservations by calling the Inn directly at 215-387-8000. Please mention the name of the conference when making your reservation. The special room rate will be available until Wednesday, March 14, 2018. After that date, reservations will be accepted on a space and rate availability basis.

Cancellation and Refund Policy

Children's Hospital of Philadelphia reserves the right to cancel or postpone any course due to any unforeseen circumstances. In the event of cancellation or postponement, Children's Hospital of Philadelphia will refund any registration fees, less a \$40 service charge, but is not responsible for any related costs, charges or expenses to participants, including cancellation charges assessed by airlines or travel agencies. In order to process refunds for course withdrawals, cancellation must be received in writing by Sunday, April 1, 2018. No refunds will be issued thereafter.

Services for People with Disabilities

If special arrangements are required for an individual with a disability to attend this meeting, please contact the Continuing Medical Education Department at 215-590-5263.

PROGRAM • Sunday, April 15, 2018

8 a.m. Introduction to the Course
Meryl S. Cohen, MD

Session 1: The Normal Pediatric Echocardiogram

8:10 a.m. Preparing a Child for a Pediatric Echocardiogram and Sedation Strategies
Christine Pascua, RDMS, FASE

8:30 a.m. The Do's and Don't's of Pediatric Echocardiography
Melissa Wasserman, RDMS, FASE

8:45 a.m. Segmental Approach and Anatomy of the Normal Heart
Paul Weinberg, MD

9:10 a.m. Echo Assessment of Segmental Anatomy
Michael Quartermain, MD

9:30 a.m. Break

Session 2: Intracardiac Shunts

10 a.m. The Anatomy and Morphology of the Atria and Atrial Septum
Andrew Cook, PhD

10:20 a.m. Imaging Assessment of Atrial Septal Defects and Other Atrial Communications
Jan Marek, MD, PhD, FESC

10:40 a.m. Imaging Assessment During and After Device Closure of Atrial Communications
Laura Mercer-Rosa, MD, MSCE

11 a.m. The Anatomy and Morphology of the Ventricular Septum and Ventricular Septal Defects
Paul Weinberg, MD

11:20 a.m. Imaging Assessment of Ventricular Septal Defects
Leo Lopez, MD

11:40 a.m. The Anatomy and Morphology of Atrioventricular Canal/Septal Defects
Andrew Cook, PhD

Noon Imaging Assessment of Atrioventricular Canal/Septal Defects
Meryl Cohen, MD

12:30 p.m. Lunch

continued >

Session 3: Systemic Veins, Pulmonary Veins, Aortic Valve and Aortic Arch

- 1:30 p.m. Anatomy and Morphology of Systemic and Pulmonary Venous Anomalies
Paul Weinberg, MD
- 1:55 p.m. Imaging Assessment of Systemic and Pulmonary Venous Anomalies
Shobha Natarajan, MD
- 2:20 p.m. Anatomy and Morphology of the Aortic Valve
Andrew Cook, PhD
- 2:35 p.m. Imaging Assessment of the Aortic Valve
Michelle Kaplinski, MD
- 2:50 p.m. Anatomy and Morphology of the Aortic Arch and Vascular Rings
Paul Weinberg, MD
- 3:10 p.m. Imaging Assessment of the Aortic Arch and Vascular Rings
Leo Lopez, MD
- 3:30 p.m. Break

Session 4: Tetralogy of Fallot

- 3:50 p.m. Anatomy and Morphology of Tetralogy of Fallot and Its Variants
Paul Weinberg, MD
- 4:10 p.m. Preoperative Imaging Assessment of Tetralogy of Fallot
Michael Quartermain, MD
- 4:30 p.m. Postoperative Imaging Assessment of Tetralogy of Fallot
Laura Mercer-Rosa, MD, MSCE
- 4:50 p.m. Interesting Cases of the Day
Faculty
- 5:15 p.m. **Special Lecture** – Imaging of the Lymphatic System in Congenital Heart Disease
Yoav Dori, MD, PhD
- 5:40 p.m. Adjourn

PROGRAM • Monday, April 16, 2018

Session 5: Transposition of the Great Arteries

- 8 a.m. Anatomy and Morphology of Transposition of the Great Arteries and the Atrial and Arterial Switch
Paul Weinberg, MD
- 8:30 a.m. Preoperative Imaging Assessment of Transposition of the Great Arteries
Meryl S. Cohen, MD
- 8:50 a.m. Imaging Assessment after the Arterial Switch Operation
Luc Mertens, MD, PhD
- 9:10 a.m. Imaging Assessment after the Atrial Switch Operation
Folkert Meijboom, MD, FESC
- 9:30 a.m. Break

Session 6: Double Outlet Right Ventricle and Truncus Arteriosus

- 10 a.m. Anatomy and Morphology of Double Outlet Ventricle
Andrew Cook, PhD
- 10:20 a.m. Imaging Assessment of Double Outlet Ventricle
Leo Lopez, MD
- 10:45 a.m. Anatomy and Morphology of Truncus Arteriosus and AP Window
Paul Weinberg, MD
- 11:05 a.m. Preoperative and Postoperative Imaging Assessment of Truncus Arteriosus and AP Window
Jan Marek, MD, PhD, FESC

Session 7: Congenitally Corrected Transposition

- 11:30 a.m. Anatomy and Morphology of Congenitally Corrected Transposition
Andrew Cook, PhD
- 11:50 a.m. Imaging Assessment of Congenitally Corrected Transposition
Brian Snarr, MD, PhD
- 12:15 p.m. Lunch

continued >

Session 8: Functionally Univentricular Hearts

- 1:15 p.m. **Anatomy and Variation of the Functionally Single Ventricle Heart**
Andrew Cook, PhD
- 1:40 p.m. **Preoperative Imaging Assessment of the Single Ventricle Heart**
Michael Quartermain, MD
- 2 p.m. **Imaging Assessment after First Stage Palliation for Single Ventricle**
Shobha Natarajan, MD
- 2:20 p.m. **Imaging Assessment after Glenn and Fontan Procedures**
Luc Mertens, MD, PhD
- 2:45 p.m. **Break**
- 3:10 p.m. **Interesting Cases of the Day**
Faculty
- 4 p.m. **Special Lecture** — Fetal Echocardiography: Where Is the Field Going?
Jack Rychik, MD
- 4:30 p.m. **Adjourn**

PROGRAM • Tuesday, April 17, 2017

Session 9: Coronary Artery Anomalies and Heterotaxy Syndrome

- 8 a.m. Anatomy and Morphology of Coronary Artery Anomalies
Paul Weinberg, MD
- 8:20 a.m. Imaging Assessment of Anomalous Coronary Arteries
Leo Lopez, MD
- 8:45 a.m. Anatomy and Morphology of Heterotaxy Syndrome/Isomerism
Paul Weinberg, MD
- 9:10 a.m. Imaging Assessment of Heterotaxy/Isomerism
Meryl S. Cohen, MD
- 9:30 a.m. Break

Session 10: Atrioventricular Valves and the Pulmonary Valve

- 10 a.m. Anatomy and Morphology of the Tricuspid Valve and Ebstein's Anomaly
Andrew Cook, PhD
- 10:20 a.m. Imaging Assessment of Tricuspid Valve Anomalies and Ebstein's Anomaly
Folkert Meijboom, MD, FESC
- 10:40 a.m. Anatomy and Morphology of the Mitral Valve and its Anomalies
Andrew Cook, PhD
- 11 a.m. Imaging Assessment of the Mitral Valve and its Anomalies
Shobha Natarajan, MD
- 11:20 a.m. Anatomy and Morphology of the Pulmonary Valve
Paul Weinberg, MD
- 11:40 a.m. Imaging Assessment of the Pulmonary Valve
Meryl S. Cohen, MD
- Noon Lunch

continued >

Session 11: Assessment of Systolic and Diastolic Function in Pediatric Patients

- 1 p.m.** **Assessment of Systolic Left Ventricular Function**
Luc Mertens, MD, PhD
- 1:30 p.m.** **Assessment of Diastolic Left Ventricular Function**
Jan Marek, MD, PhD, FESC
- 2 p.m.** **Assessment of RV Function in Two-ventricle Circuit**
Laura Mercer-Rosa, MD, MSCE
- 2:30 p.m.** **Break**
- 2:50 p.m.** **Assessment of Single Ventricular Function**
Luc Mertens, MD, PhD
- 3:10 p.m.** **Utilization of 3D for Perioperative Imaging in Children**
Matthew Jolley, MD
- 3:30 p.m.** **Interesting Cases of the Day**
Faculty
- 4:30 p.m.** **Adjourn**

Unless otherwise noted, faculty is from Children's Hospital of Philadelphia and the Perelman School of Medicine at the University of Pennsylvania.

Course Directors

Meryl S. Cohen, MD

*Associate Chair, Division of Cardiology
Professor of Pediatrics*

Luc Mertens, MD, PhD

*Head of Echocardiography
Hospital for Sick Children
Professor of Pediatrics
University of Toronto
Toronto, Ontario*

Faculty

Andrew Cook, PhD

*Director of Cardiac Registry
Great Ormond Street Hospital for Children
NHS Foundation Trust
London, UK*

Yoav Dori, MD, PhD

*Attending Cardiologist
Director, Center for Lymphatic Imaging and Interventions
Associate Professor of Pediatrics*

Matthew Jolley, MD

*Attending Anesthesiologist
Assistant Professor of Anesthesia, Cardiac Anesthesiology*

Michelle Kaplinski, MD

Advanced Imaging Fellow

Leo Lopez, MD

*Medical Director, Echocardiography Laboratory
Nicklaus Children's Hospital
Clinical Professor of Pediatrics
Florida International University
Miami, Fla.*

Jan Marek, MD, PhD, FESC

*Consultant Paediatric Cardiologist and Clinical Lead for
Echocardiography and Prenatal Cardiology
Professor of Pediatric Cardiology
Great Ormond Street Hospital for Children
NHS Foundation Trust
London, UK*

continued >

Folkert Meijboom, MD, FESC
Pediatric Cardiologist
Centre for Congenital Heart Disease
Division of Adult Congenital Heart Disease
Utrecht, The Netherlands

Laura Mercer-Rosa, MD, MSCE
Attending Cardiologist
Assistant Professor of Pediatrics

Shobha Natarajan, MD
Medical Director, Quality Improvement Core
The Cardiac Center
Associate Professor of Clinical Pediatrics

Christine Pascua, RDMS, FASE
Technical Director, Echocardiography Laboratory

Jack Rychik, MD
Associate Chair, Division of Cardiology
Director, Fetal Heart Program
Director, Single Ventricle Survivorship Program
Professor of Pediatrics

Brian Snarr, MD, PhD
Advanced Imaging Fellow

Michael Quartermain, MD
Medical Director, Echocardiography Laboratory
Clinical Associate Professor of Pediatrics

Melissa Wasserman, RDMS, FASE
Pediatric Sonographer, Echocardiography Laboratory

Paul Weinberg, MD
Director, Cardiac Registry
Professor of Pediatrics and Radiology